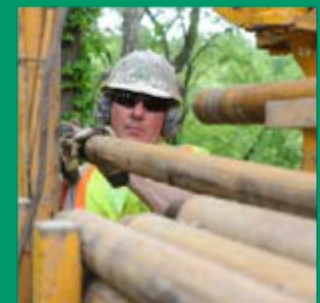


USING BI AND ANALYTICS TO MANAGE TRANSPORTATION ASSETS



OHIO DEPARTMENT OF
TRANSPORTATION

USING BI AND ANALYTICS TO MANAGE TRANSPORTATION ASSETS



Presenters:
Andrew Williams & Ian Kidner
ODOT Division of Planning

MEETING/EXCEEDING SYSTEM CONDITION CSF THROUGH 2021

The TAMP Documents:

- ODOT's preservation strategies
- Planned investments using anticipated funding levels
- Making data driven decisions

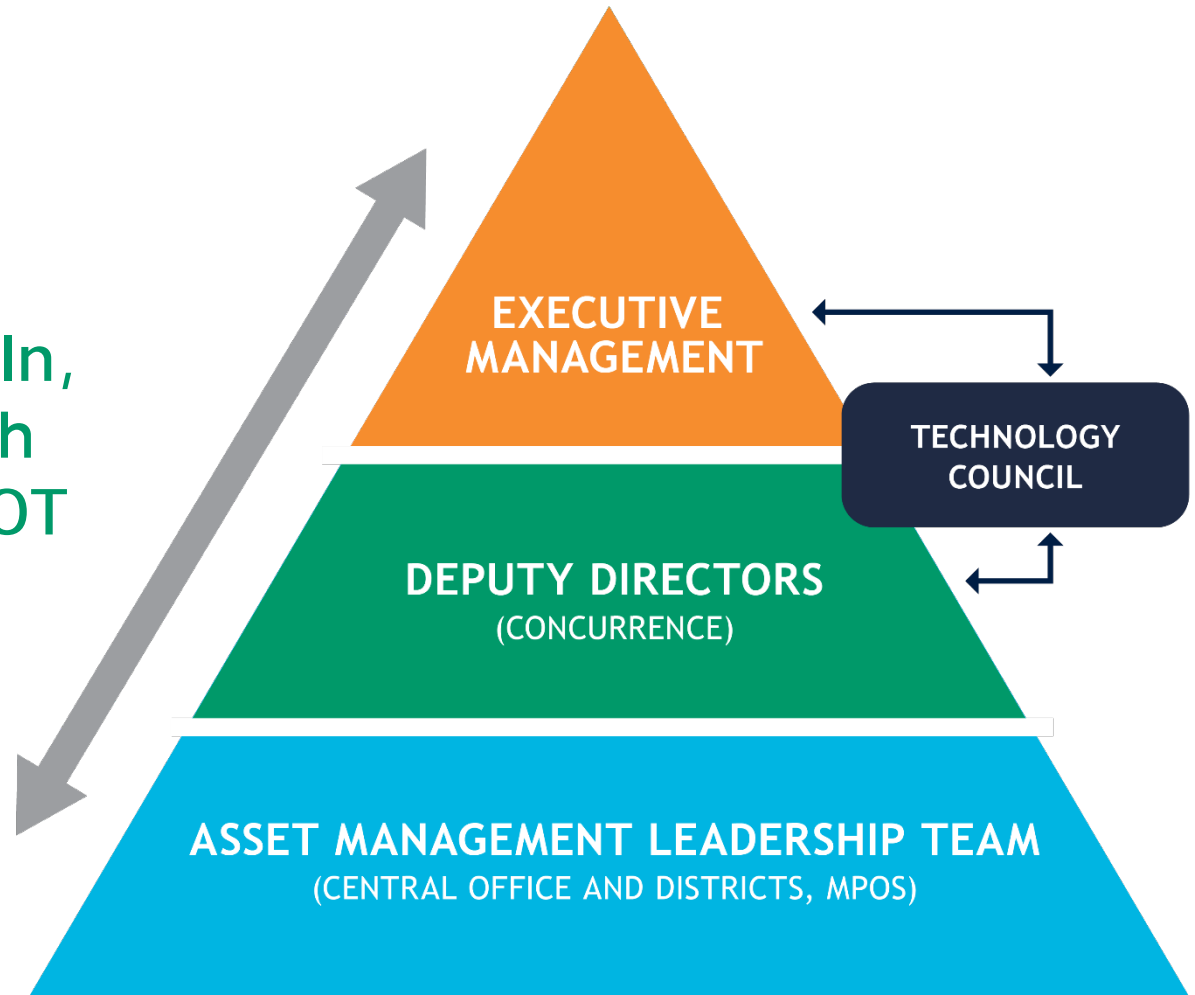


USING BI AND ANALYTICS TO MANAGE TRANSPORTATION ASSETS

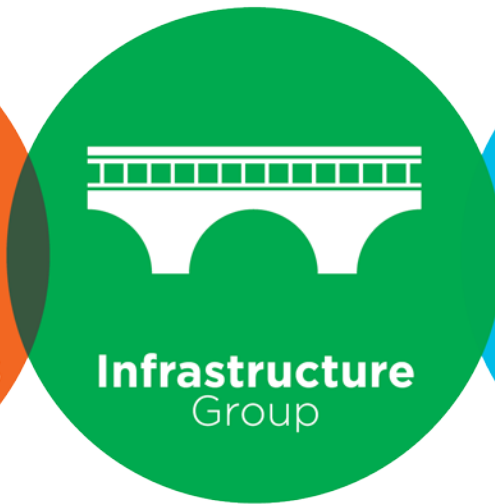
TAMP Framework
TAMP Leadership Team
SubGroups
Slide on efficiency trending

ASSET MANAGEMENT LEADERSHIP TEAM

Multi-Level Buy-In,
Holistic Approach
Across All of ODOT



HOW WILL WE ACCOMPLISH?



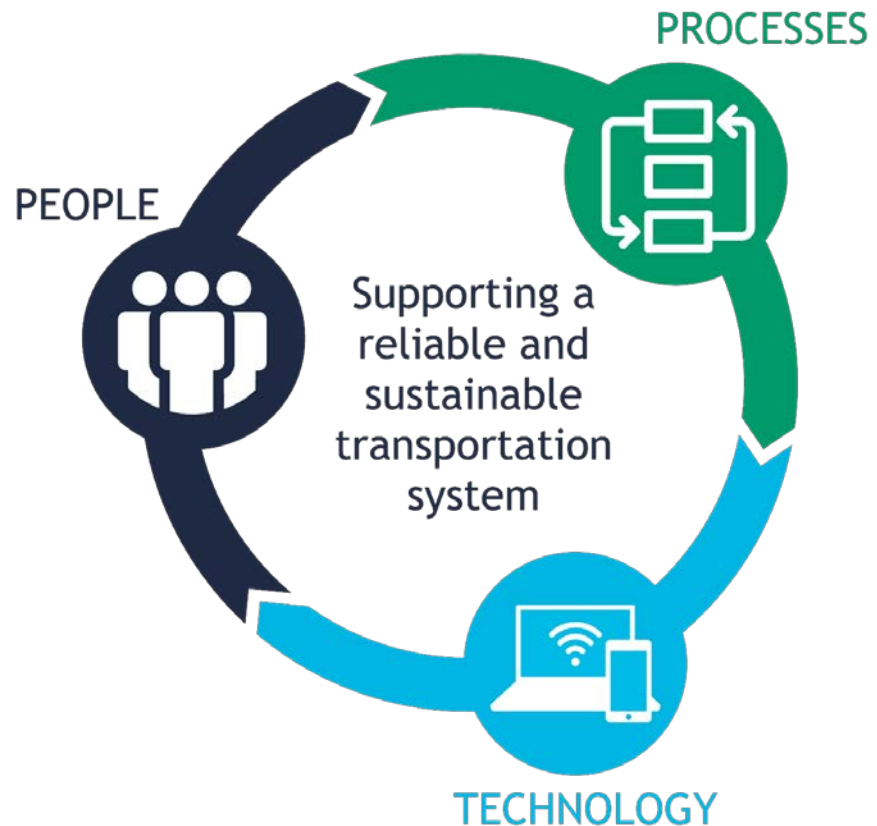
Multi-disciplinary business owners and stakeholders from ODOT Central Office and Districts

SYSTEMATIC PROCESS: OPTIMIZE INVESTMENTS

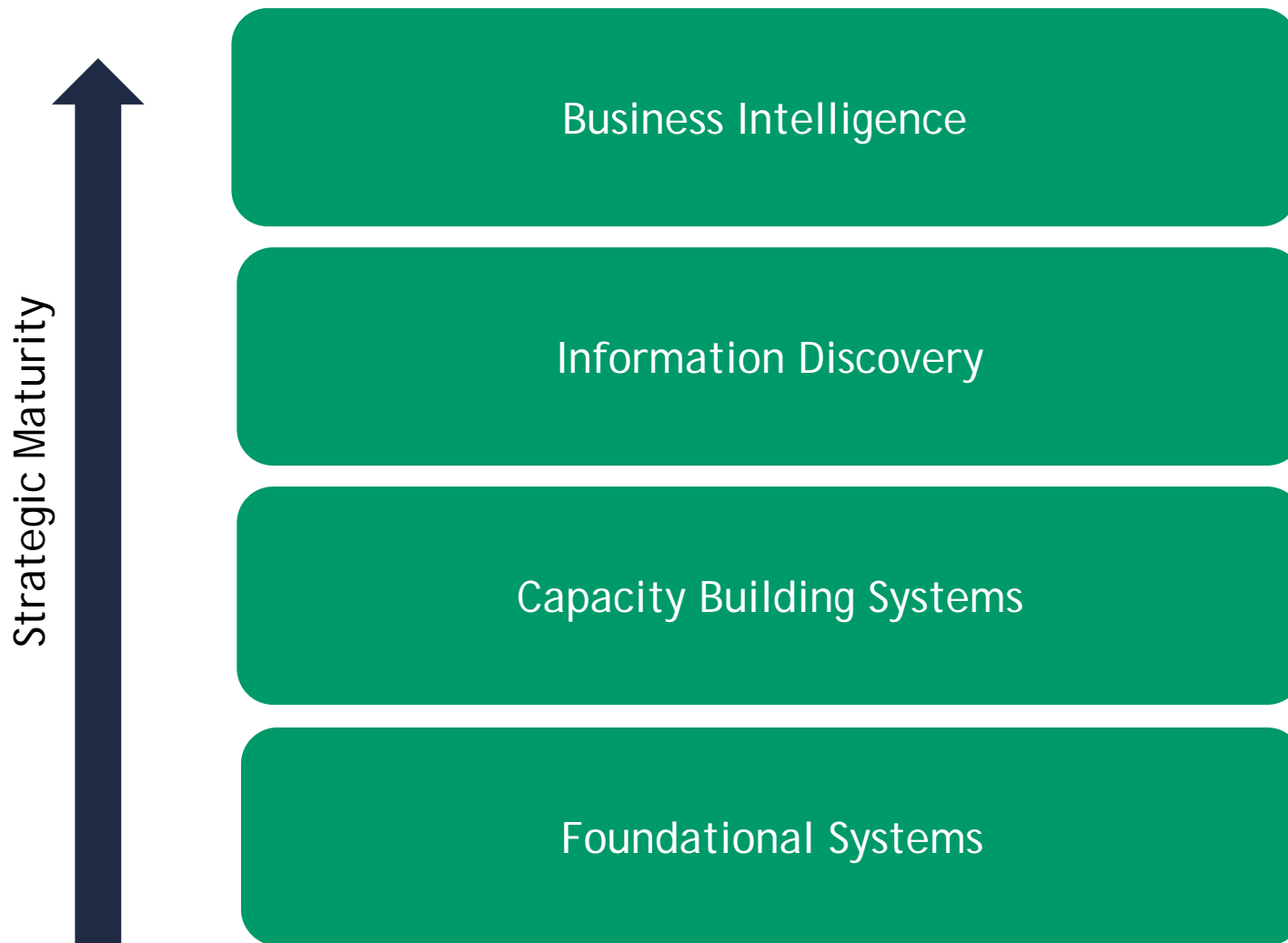


USING BI AND ANALYTICS TO MANAGE TRANSPORTATION ASSETS

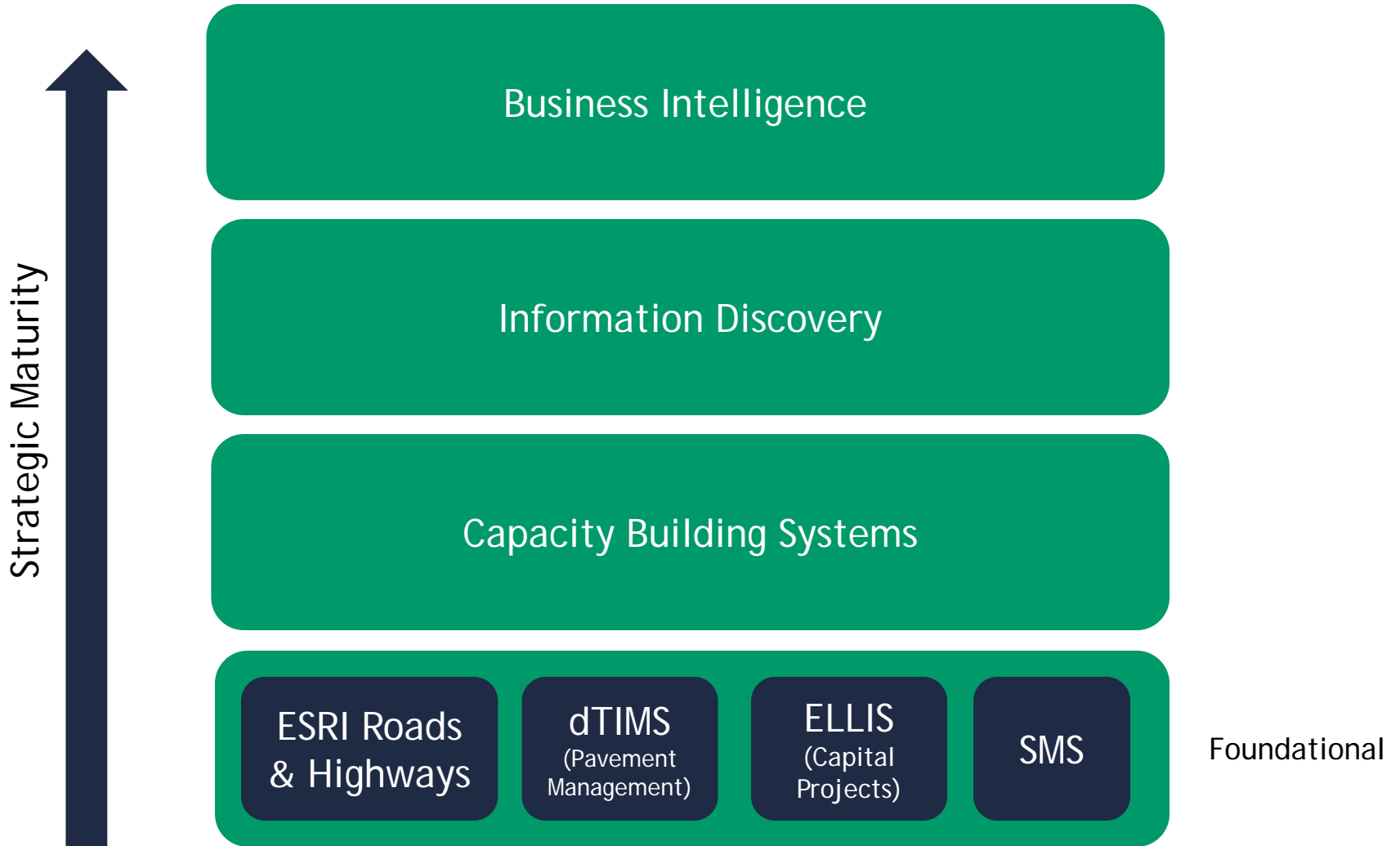
Three Critical Elements to Success



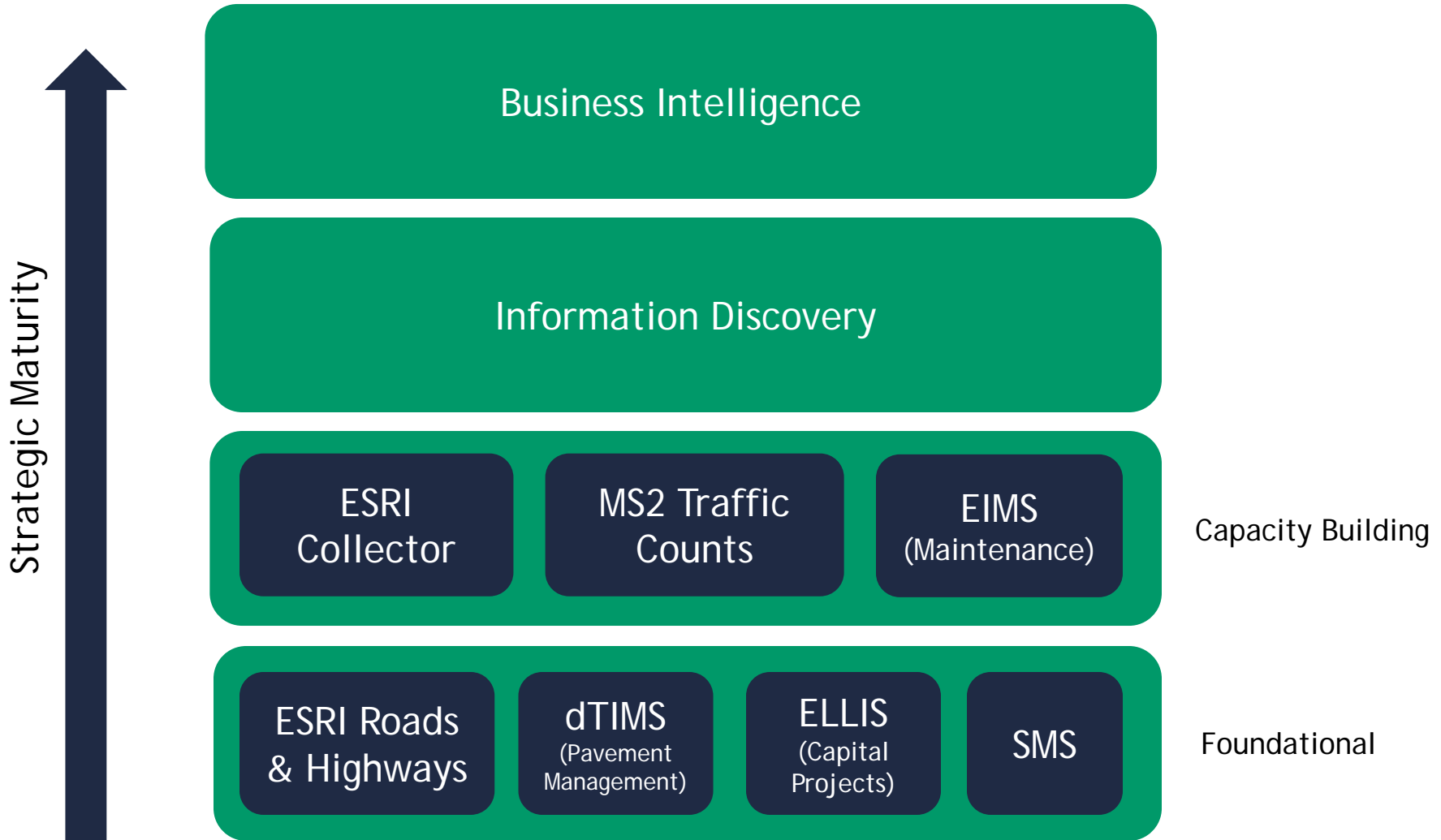
TECHNOLOGY PORTFOLIO



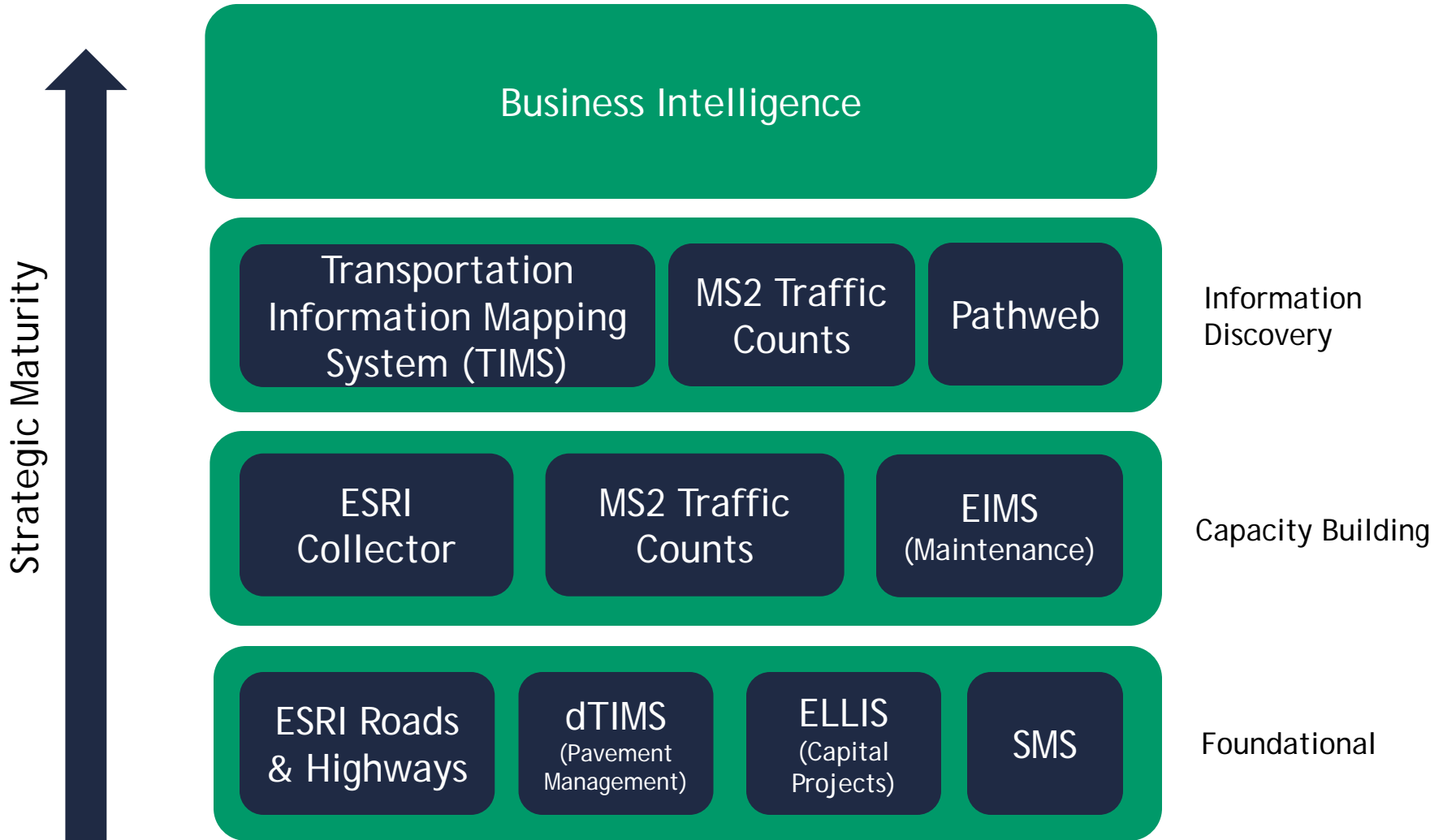
TECHNOLOGY PORTFOLIO



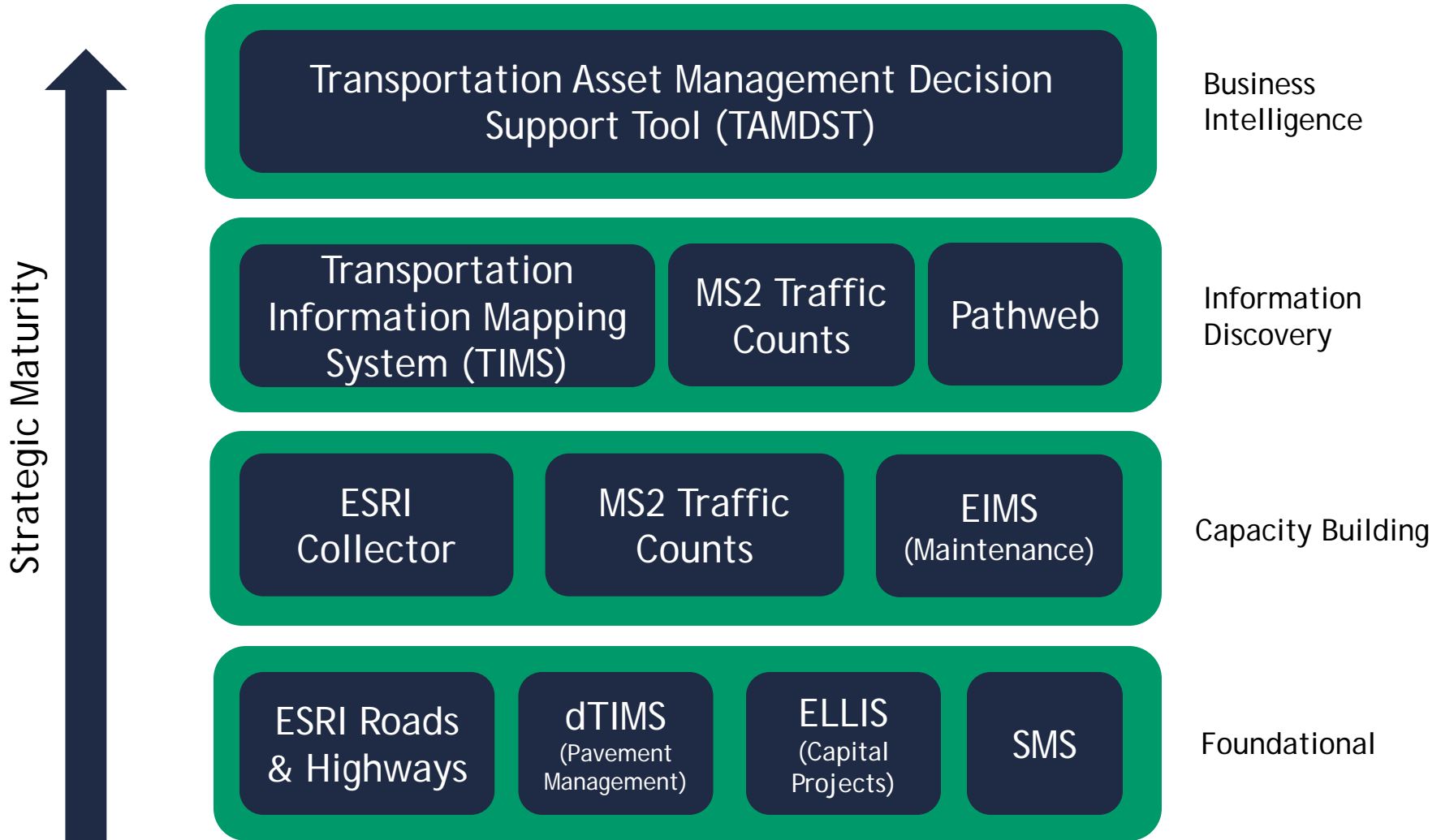
TECHNOLOGY PORTFOLIO



TECHNOLOGY PORTFOLIO



TECHNOLOGY PORTFOLIO



USING BI AND ANALYTICS TO MANAGE TRANSPORTATION ASSETS

Capacity Building

ESRI
Collector

COTS, reusable field mobile data collection
Culverts, BMP, Guardrail (Safety Barrier), Outfalls, Horizontal
Curves, ADA Right of Way, Signs, Underdrains
Adopt-a-Highway, Bi-Weekly Inspection, Geohazards, Highway
Drainage, Highway Lighting, ITS

MS2 Traffic
Counts

AADT, State System, available local

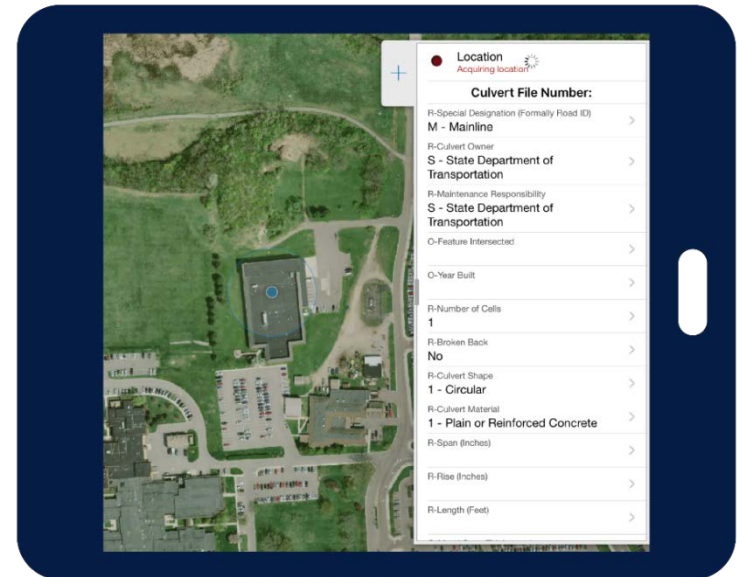
EIMS

Agile Assets - maintenance work order tracking

USING BI AND ANALYTICS TO MANAGE TRANSPORTATION ASSETS

ESRI Collector

- 400+ iPads
- 500+ people trained
- 9 assets in production
8 in development
- Supporting applications
& technology
- Inventories published to
Transportation Information
Management System (TIMS) nightly



USING BI AND ANALYTICS TO MANAGE TRANSPORTATION ASSETS

Information Discovery

Transportation
Information
Mapping System
(TIMS)

Custom Web-Information Portal
<https://gis.dot.state.oh.us/tims>

MS2 Traffic Counts

AADT, State System, available local
<http://odot.ms2soft.com/>

Pathweb

Digital Photolog, IRI, Road Surface
<http://pathweb.pathwayservices.com/ohiopublic/>

Business Intelligence

Transportation Asset
Management Decision
Support Tool (TAMDST)

Custom BI / Analytic Tool

- MS Power BI
- Support Work Plan Development

Transportation Asset Management Decision Support Tool

Demo

USING BI AND ANALYTICS TO MANAGE TRANSPORTATION ASSETS

Andrew Williams,
Administrator

Ohio Department of Transportation
Office of Technical Services
Andrew.Williams@dot.ohio.gov
614-752-4059

Ian Kidner, GISP
GIS Manager

Ohio Department of Transportation
Office of Technical Services
ian.kidner@dot.ohio.gov
614-752-5743